

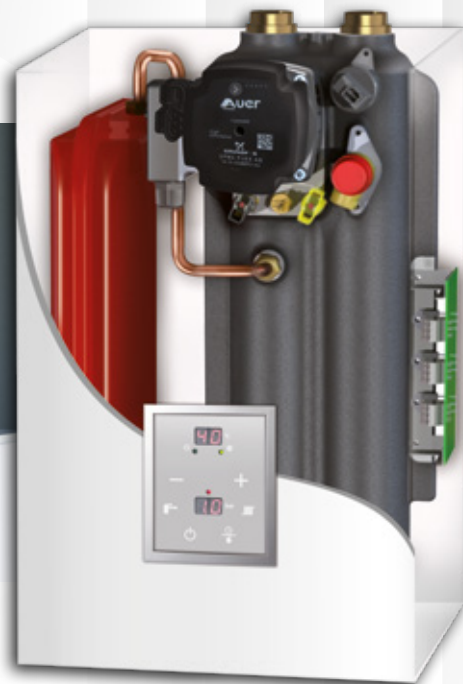
GIALIX



Wall mounted electric boiler
2 to 196 kW



An adjustable power to match your needs for more savings !



**THE ONLY BOILER IN THE WORLD WITH A
20 YEARS GUARANTEED**

CAST IRON
heating body

*Easily replaces any type of
boiler*

- + Quiet
- + Durable
- + Compact
- + Modulating



*2 to 196 kW models to suit any
type of installation*



ELECTRIC



HEATING



HOT WATER

FRENCH
Manufacturer

www.auer.fr



SMART DESIGN

The maximum power can be adjusted to meet the exact needs of your accommodation with a simple setting on the control panel. Thus, the electric power subscribed with your supplier is reduced to the minimum

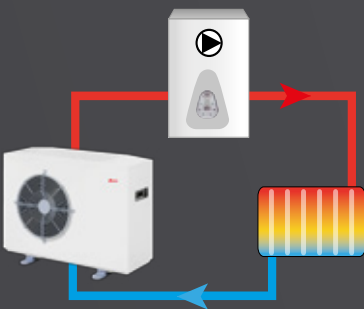
- No storage tank or fuel pipes needed
- Odourless
- No CO / CO₂ / NO_x emissions
- No gas or fuel leaks
- No chimney or piping needed
- No installation work required
- No mandatory annual maintenance
- Only one energy provider needed
- Energy billed after use
- Stable energy costs

100% GUARANTEED SEASONAL EFFICIENCY

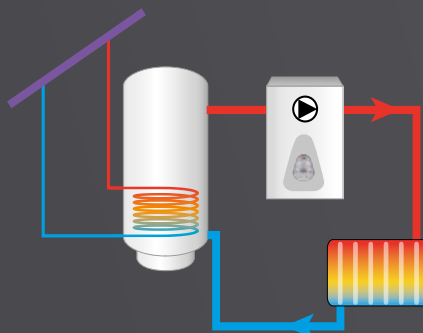
Every kW used goes back into your heating

AN IDEAL BACK-UP TO THE RENEWABLE ENERGIES

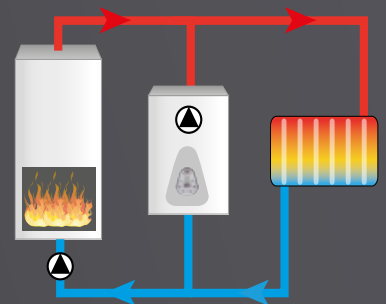
Heat pump



Solar panels



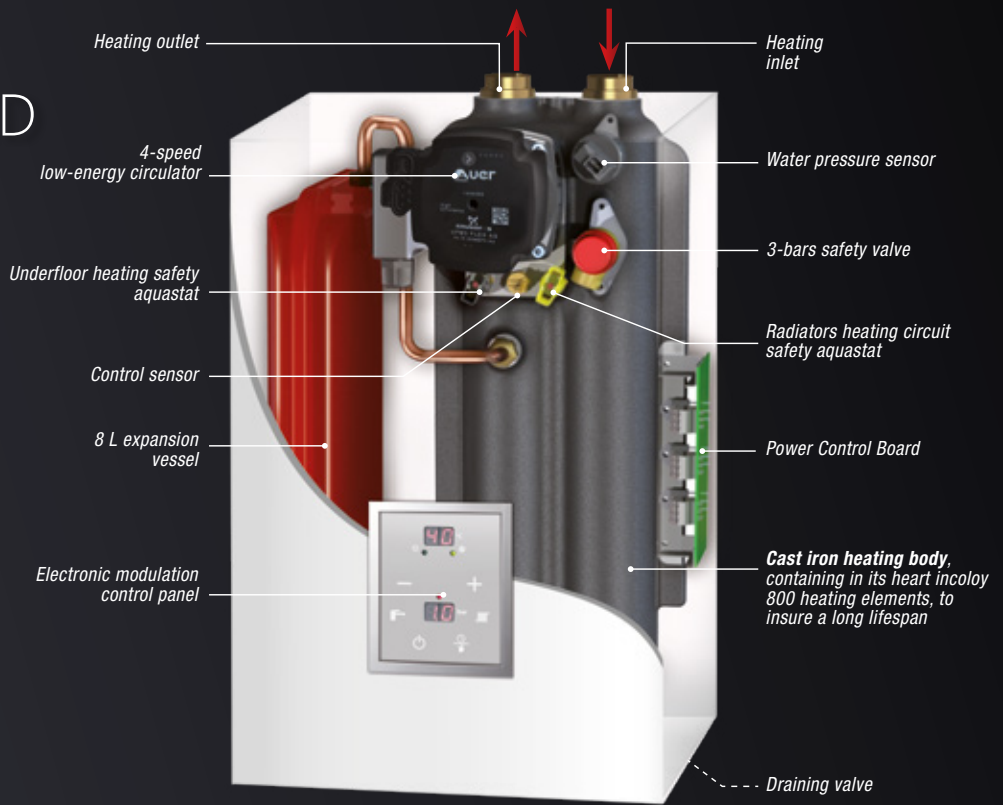
Wood-burning
boilers



ALL INTEGRATED

**performance
&
durability**

NEW
circulator
**LOW
ENERGY**



CAST IRON HEATING BODY

- Robust and corrosion-proof
- Hard-wearing over time
- 100% recyclable
- Monobloc moulded, incorporates all hydraulic components, and eliminates the pipework and the risk of leakage.

+ ROBUST

UNIQUE!

The Gialix's cast iron heating body is the only one which guarantees even more performance, comfort and durability

+ COMPACT



AN ENTIRE RANGE TO COVER ALL SOLUTIONS

DOMESTIC INSTALLATION

NEW
circulator
LOW
ENERGY

- For new-builds projects or as a replacement of an old boiler, Gialix is also the perfect back-up boiler for renewable energies.
- A highly-resistant cast iron heating body
- Electric power subscribed with your energy supplier is reduced to the minimum
- Very compact (H 500 x L 340 x D 280) and very light (20 kg), Gialix easily fits anywhere
- Electronic power modulation

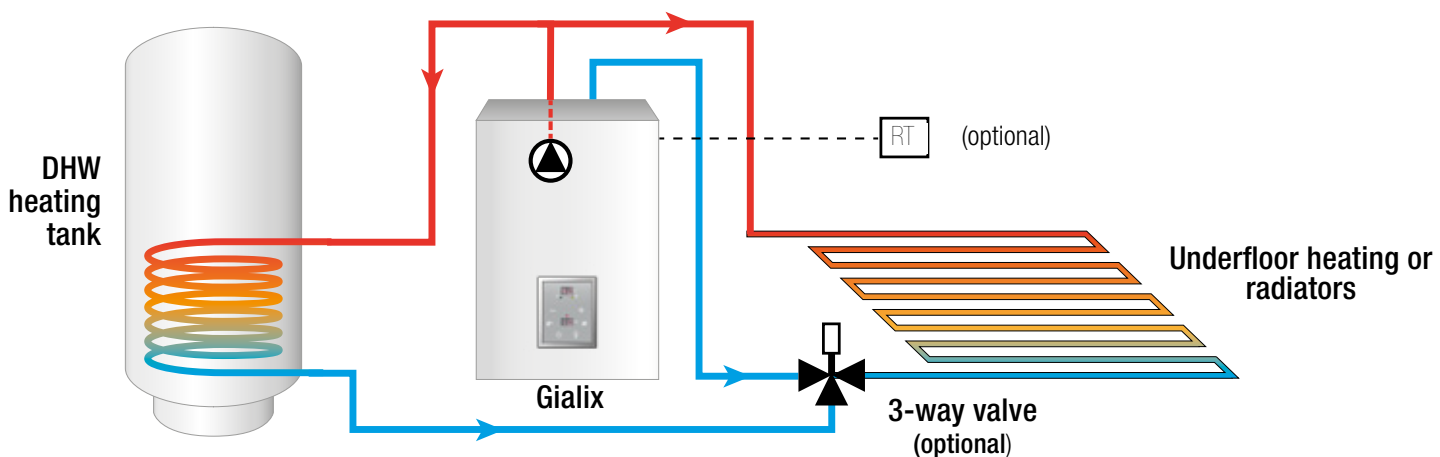


The maximum power can be adjusted to meet the exact needs of the accommodation with a simple setting on the control panel

Setting possibilities of the maximum power:

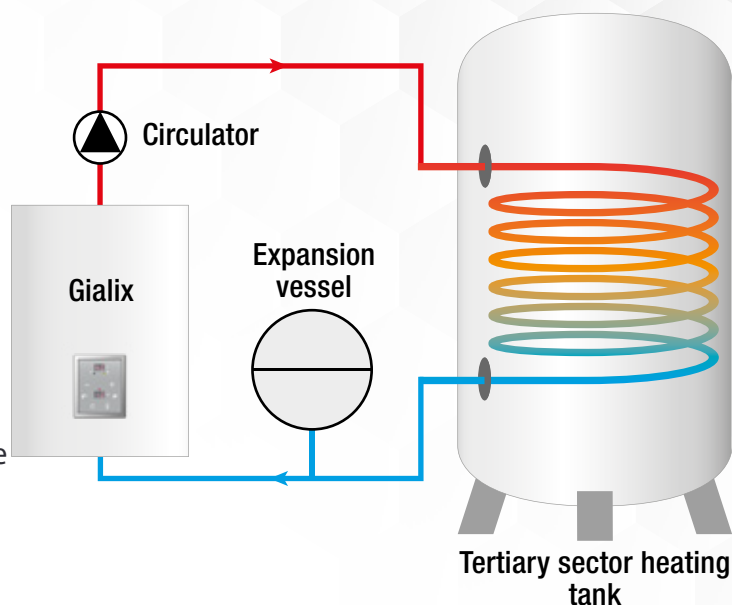
• 6 kW : - 0 to 2 kW	• 12 kW : - 0 to 2 kW	• 16 kW : - 0 to 2,7 kW
- 0 to 4 kW	- 0 to 4 kW	- 0 to 5,3 kW
- 0 to 6 kW	- 0 to 6 kW	- 0 to 8 kW
	- 0 to 8 kW	- 0 to 10,7 kW
	- 0 to 10 kW	- 0 to 13,3 kW
	- 0 to 12 kW	- 0 to 16 kW

Installation example with 1 heating circuit + 1 DHW circuit with 3-way valve (option)



TERTIARY INSTALLATION

Installation example with 1 collective DHW circuit



- Community housing and tertiary sector use
 - radiators
 - underfloor heating
 - unit heaters
 - domestic hot water, etc...
- Community domestic hot water with a plate heat exchanger or heating tank
- Swimming pools, with a plate heat exchanger
- Industrial process
- Back-up for renewable energies
- Wall mounted and very compact, easy to install anywhere

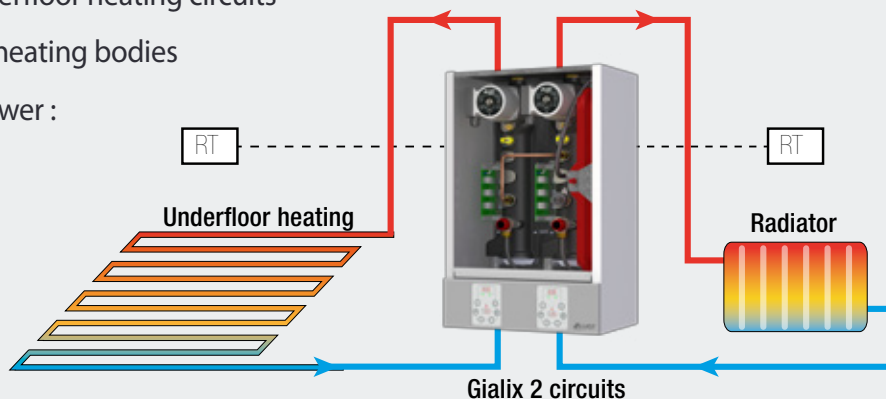


GIALIX 12 KW - 2 CIRCUITS

NEW
circulators
LOW
ENERGY

- Designed to supply 2 independent heating circuits :
 - 1 underfloor heating + 1 radiator circuit
 - 2 radiator circuits
 - 2 underfloor heating circuits
- 2 independent cast iron heating bodies
- Adjustable maximum power :

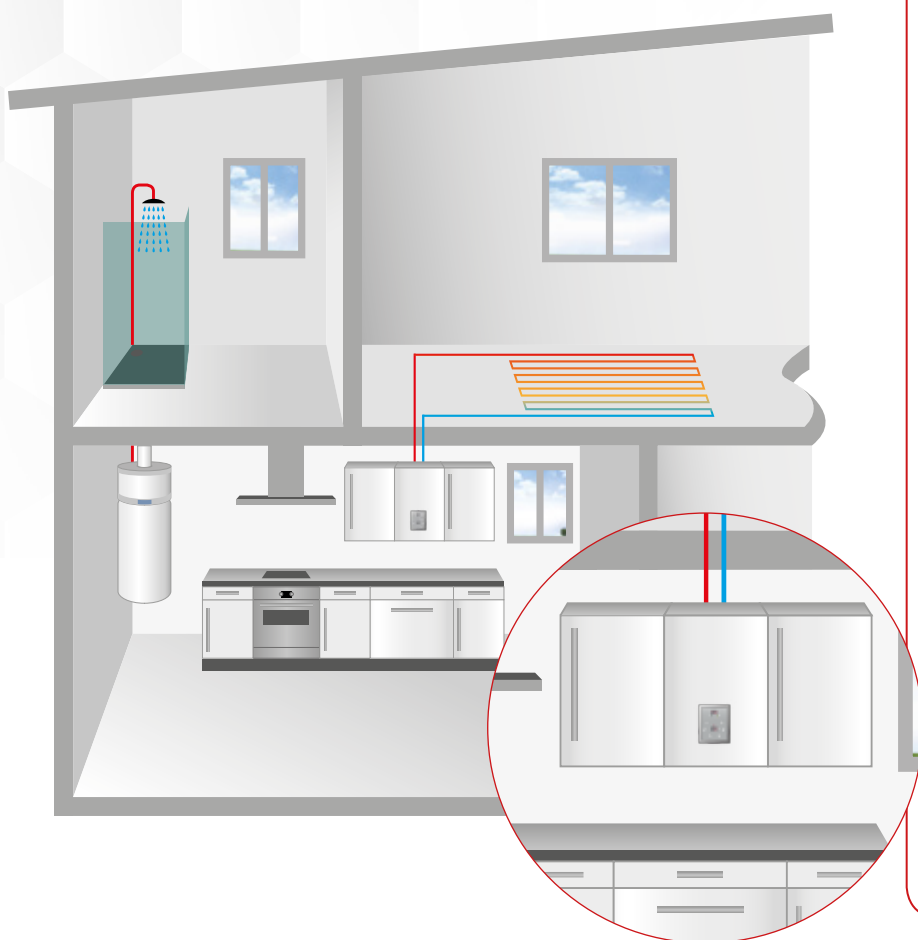
2 x	{	- 2 kW (0 to 2 kW)
		- 4 kW (0 to 4 kW)
		- 6 kW (0 to 6 kW)



A FAST AND EASY INSTALLATION

Easily replaces any type of boiler and can be installed anywhere in the house !

No need to remove your existing heating installation : a simple hydraulic link and an electrical connection are enough



Ultra-precise and intuitive controls



Unlike ordinary electric boilers, which have mechanical aquastats, Gialix offers a modulating electronic control as standard.

This prevents discomfort caused by power surges, sources of over-consumption, noise, heat trains and premature wear on components .

Gialix MT range is enhanced with electronic power modulation :

- Reliable and durable (no mechanical wear)
- Ultra-quiet
- Continuously produces and diffuses just the right amount of heat

The power is closely monitored by a mechanical and electronic dual control, giving you both electro-mechanical safety and precise electronic control of the power you use



GIALIX RELIEF*

The relief electric boiler dedicated to professionals

A 3 kW 230V single phase Gialix ready to connect, with a 16 A extension, with low weight and size. Its handle allows an easy transportation

DOMESTIC HOT WATER WITH GIALIX DS

ELECTRIC BOILER WITH DHW STORAGE

for heating and domestic hot water



All the advantages of the Gialix MT with the added comfort of having a rapidly regenerated hot water supply on demand

INGENIOUS AND PERFORMING

- Power output adjustable by 2kW stages
- A combined 80 L domestic hot water tank
- 155 L of hot water output at 40°C in 10 min
- Only 25 min needed for the tank to regain its temperature ⁽¹⁾
- 5 times less scale than an ordinary electric water heater: the solution for hard water !

(1) from 40 to 65°C in 25 min

ADVANTAGES

- Extremely compact, provides heating for your home and abundant supply of hot water
- Replaces your old gas boiler and eliminates the need for a service subscription: you will only have one meter in your house
- Ultra-precise controls, just like those in the Gialix MT range

Up to
4 TIMES MORE
hot water
than a same capacity
electric tank

MOBILE GIALIX*

Installer's full service boiler

- A ready to connect Gialix with handle and wheels for an user-friendly transportation and handling
- Perfectly stable on the floor
- 2 - 4 - 6 - 8 - 10 or 12 kW adjustable power to fit to any type of configuration
- 230 V single phase or 400 V three phases power supply
- Direct connection behind the boiler
- Includes special program for first warming of floor screeds



TECHNICAL SPECIFICATIONS

STANDARD FEATURES AND PARTS

* for models up to 24 kW

- Power can be adapted to meet each dwelling needs
- Wall-hung
- Galvanised steel bodywork covered with white epoxy polyester
- Incoloy 800 heating elements for durability
- Expansion vessel*
- 4-speed circulator*
- Safety valve
- Pressure sensor
- 65°C safety aquastat* (underfloor heating) and 110°C safety aquastat (radiators)

Model	Power, adjustable by changing the setting ⁽¹⁾	Voltage	Dimensions W x H x D (mm)	Weight (kg)	Number of power stages	Control	Hydraulic equipment	Ext. sensor	DHW sensor	Ref.
-------	--	---------	---------------------------	-------------	------------------------	---------	---------------------	-------------	------------	------

HYDRAULICALLY EQUIPPED ELECTRIC BOILERS TO BE USED WITH UNDERFLOOR HEATING OR RADIATORS

ELECTRONIC REGULATION AND MODULATION OF POWER

CAST IRON HEATING BODY	Model	Power	Voltage	Dimensions	Weight	Number of power stages	Control	Hydraulic equipment	Ext. sensor	DHW sensor	Ref.
	6 MT	2-4-6 kW	SP*	340 x 500 x 280	20	3					
12 MT	2-4-6-8-10-12 kW	SP*	340 x 500 x 280	25	3	132631					
12 MT	2-4-6-8-10-12 kW	400V 3P*	340 x 500 x 280	25	3	132636					
16 MT	2,7-5,3-8-10,7-13,3-16 kW	400V 3P*	340 x 500 x 280	25	3	132637					
6 MT comfort +	2-4-6 kW	SP*	340 x 500 x 280	20	3	Electronic, modulating for a heating circuit depending on outdoor temperature and a DHW production circuit		included	included	132634	
12 MT comfort +	2-4-6-8-10-12 kW	SP*	340 x 500 x 280	25	3					132633	
12 MT comfort +	2-4-6-8-10-12 kW	400 V 3P*	340 x 500 x 280	25	3					132638	
16 MT comfort +	2,7-5,3-8-10,7-13,3-16 kW	400V 3P*	340 x 500 x 280	25	3					132639	
24 MA comfort +	4-8-12-16-20-24 kW	400V 3P*	405 x 620 x 280	42	6			included	included	132616	

HYDRAULICALLY EQUIPPED ELECTRIC BOILERS FOR 2 UNDERFLOOR OR RADIATORS HEATING CIRCUITS HEATING CIRCUITS

ELECTRONIC REGULATION AND MODULATION OF POWER

2 CAST IRON HEATING BODIES	Model	Power	Voltage	Dimensions	Weight	Number of power stages	Control	Hydraulic equipment	Ext. sensor	DHW sensor	Ref.
12 MT - 2 circuits Comfort +	(2x) (2-4-6 kW)	SP*	405 x 620 x 280	28	2 x 3	Electronic, modulating, for 2 heating circuits, depending on outdoor temperature and a DHW production circuit (optional)	1 8L exp. vessel, 2 circ. pumps, 2 safety valves, 2 pressure sensors	included x 2	optional x 2		132635

DOUBLE SERVICE ELECTRIC BOILERS

CAST IRON HEATING BODY	Model	Power	Voltage	Dimensions	Weight	Number of power stages	Control	Hydraulic equipment	Ext. sensor	DHW sensor	Ref.
Gialix DS	2-4-6 kW	SP*	520 Ø x 1065	80	3	Electronic, modulating for a heating circuit depending on outdoor temperature and a DHW production circuit	8L exp. vessel, circ. pump, safety valve, pressure sensor, 3-way valve	included		80 L tank	132641

ELECTRIC BOILER TO BE HYDRAULICALLY EQUIPPED

CAST IRON HEATING BODY	Model	Power	Voltage	Dimensions	Weight	Number of power stages	Control	Hydraulic equipment	Ext. sensor	DHW sensor	Ref.
36 MA	24 to 36 kW	400 V 3P*	460 x 740 x 280	34	2	Electronic, modulating, for a high temperature heating circuit and a DHW production circuit (optional)	Safety valve, pressure sensor, low water level electronic pressure switch	optional	optional	131417	
48 MA	32 to 48 kW	400 V 3P*	460 x 740 x 280	34	2					131418	
72 MA	48 to 72 kW	400 V 3P*	460 x 740 x 280	38	3					131419	
120 MA	96 to 120 kW	400 V 3P*	570 x 740 x 350	50	5					131420	
196 MA	140 to 196 kW	400 V 3P*	630 x 740 x 400	70	6					131423	

* SP = Single phase, 3P = Three phase

Options

TA	Room thermostat	710043
TH	Room thermostat with timer	710044
TH radio	Non-chronoproportional wireless room thermostat	710172
DHW sensor	For Gialix MT or MA (2 needed for Gialix 12MT-2 circuits)	710029
Outdoor sensor	For Gialix MT or MA	710157
3-way valve	For Gialix MT or MT comfort+ and Gialix 24MA comfort+ connected to a DHW tank (2 needed for Gialix 12MT-2 circuits)	710098
Adjustable tripod	For Gialix DS	730016
Wall-fixing bar	For Gialix DS	713130
Wall brackets (x2)	For Gialix DS	730018
Thorix EVOLUTION	To supply 2 radiator circuits and/or underfloor heating (mixed circuit 9 kW max.)	411002
Motorised 2-way valve	To control the direct circuit (to be fitted in Thorix EVOLUTION)	740022
Room temperature sensor with display	For Thorix EVOLUTION (1 sensor needed per circuit)	751009

⁽¹⁾ Boiler delivered at maximum heating capacity but adjustable to the desired heating capacity thanks to the control panel

YOUR INSTALLER :

HEAD OFFICE AND EXPORT

107 boulevard Ney - 75876 Paris cedex 18
Tel. +33 1 53 06 27 11 - Fax. +33 1 44 85 07 15
E-mail: export@auer-gianola.fr

TRAINING & TECHNICAL ADVICE

Tel. +33 3 22 61 33 33 - Fax. +33 3 22 30 01 19
E-mail : enr@auer.fr

